

# Hands on Higher Ed.



**McFatter Technical College**  
2025 *Winter/Spring* Schedule



Opened in 1985 with the addition of the Hospitality Building in 1996 and the Technical High School in 1998, McFatter Technical College operates on a \$26 million complex on 24 acres at the corner of Davie Road and Nova Drive, in the Town of Davie, Florida.

A major event occurred on June 24, 2014, when the School Board of Broward County officially changed our name to McFatter Technical College. Hence, a new era in career, technical and adult education was launched.

McFatter Technical College was established as an area post-secondary technical college of the School Board of Broward County, Florida to offer technical education to both adults and secondary students in over forty program areas. In addition, McFatter holds membership, partnership or affiliation with over fifteen local, state and national organizations.

Industry-validated curriculum, complemented by state-of-the-art laboratories and equipment were designed to meet current and future employment needs of South Florida business and industry. The curriculum and specialized practical laboratory experiences have enabled students to acquire, refine and upgrade occupational skills on a full-time or part-time basis in day and evening classes, distance, hybrid or face-to-face delivery.

### **CAMPUS INFORMATION**

For additional information on our institution, policies, and procedures, please visit our website at [www.mcfattertechnicalcollege.edu](http://www.mcfattertechnicalcollege.edu) or call 754.321.5700.

McFatter TECHNICAL COLLEGE 

# Vision

*The William T. McFatter Technical College and Technical High School has a **vision** to change the lives of people from all backgrounds through innovative education.*

# Mission

*In working to achieve this vision, it is our **mission** to promote excellence in academic, career, and technical studies in order to prepare students to enter and remain competitive in a global workforce.*

# Office of Admissions

**Franzie Williams, Office of Admissions Director  
High School • Postsecondary**

(754) 321-5732 or [franzie.williams@browardschools.com](mailto:franzie.williams@browardschools.com)

**GED® Test Preparation** **PAGE 8**

**Hospitality and Tourism**

**PAGE 20**

- Baking & Pastry Arts
- Culinary Vegetarian & Plant Based Specialty
- Professional Culinary Arts & Hospitality

**Tamika Fussell, Certified School Counselor**

(754) 321-5840 or [tamika.fussell@browardschools.com](mailto:tamika.fussell@browardschools.com)

**Architecture & Construction** **PAGE 9**

- Drafting • Electricity

**Business Management & Administration** **PAGE 13**

- Accounting Operations • Administrative Office Specialist
- Legal Administrative Specialist
- Medical Administrative Specialist

**Manufacturing** **PAGE 10**

- Welding Technology • Welding Technology-Advanced

**Transportation, Distribution & Logistics** **PAGE 24**

- Automotive Collision Technology Technician
- Master Automotive Service Technology
- Marine Service Technologies

**Meghan Emerson, Certified School Counselor**

(754) 321-5891 or [meghan.emerson@browardschools.com](mailto:meghan.emerson@browardschools.com)

**Arts, A/V Technology & Communications** **PAGE 11**

- Digital Media/Multimedia Design • Digital Photography Technology • Digital Printing Technology
- Graphic Communications and Printing Technology
- Television Production Technology

**Education & Training** **PAGE 15**

- Early Childhood Education • Principles of Teaching

**Health Science** **PAGE 16**

- Dental Laboratory Technology
- Electrocardiograph Technology • Massage Therapy
- Medical Assisting • Pharmacy Technician-ATD

**Karrah Sterling Fort, School Social Worker**

(754) 321-5778 or [karrahsterling.fort@browardschools.com](mailto:karrahsterling.fort@browardschools.com)

- Homeless Liaison

**Dionne Streete, Broward Fire Academy Advisor**

Located at: 2600 SW 71st Terrace, Davie, FL 33314

(754) 321-1306 or [dionne.streete@browardschools.com](mailto:dionne.streete@browardschools.com)

**Health Science** **PAGE 17**

- Emergency Medical Technician-ATD

**Law, Public Safety & Security** **PAGE 23**

- Firefighter

**Rachel Victor, Certified School Counselor**

(754) 321-5753 or [rachel.victor@browardschools.com](mailto:rachel.victor@browardschools.com)

**Information Technology** **PAGE 21**

- Applied Cybersecurity • Applied Information Technology • Game/Simulation/Animation Programming
- Network Support Services • Web Development

**Health Science** **PAGE 19**

- Practical Nursing

# Office of Student Affairs

**Roger Barnhart**

**Office of Student Affairs Director**

(754) 321-5774

[roger.barnhart@browardschools.com](mailto:roger.barnhart@browardschools.com)

**Nancy Acevedo, Financial Aid Advisor**

(754) 321-5738

[nancy.acevedo@browardschools.com](mailto:nancy.acevedo@browardschools.com)

**Kim Calliste, Financial Aid Director**

(754) 321-5899

[kim.calliste@browardschools.com](mailto:kim.calliste@browardschools.com)

**Bianca Chang, Accreditation Coordinator**

(754) 321-5751

[bianca.chang@browardschools.com](mailto:bianca.chang@browardschools.com)

**Vera Fernandez, International Student Advisor**

(754) 321-5737

[vera.alvarez@browardschools.com](mailto:vera.alvarez@browardschools.com)

**Kevin Frye, Testing Facilitator**

(754) 321-5812

[kevin.frye@browardschools.com](mailto:kevin.frye@browardschools.com)

**Ana Isabel Hernandez, Career Center Advisor**

(754) 321-5750

[anaisabel.hernandez@browardschools.com](mailto:anaisabel.hernandez@browardschools.com)

**Jennifer Long, Alumni Coordinator**

(754) 321-5802

[jennifer.long@browardschools.com](mailto:jennifer.long@browardschools.com)

**Alvin Ranzy, Family Counselor**

(754) 321-5790

[alvin.ranzy@browardschools.com](mailto:alvin.ranzy@browardschools.com)

**Jessica Clark Flournoy, Veteran's Certifying Official**

(954) 614-1608

[jessica.clark@browardschools.com](mailto:jessica.clark@browardschools.com)

**Preston Selvanik, Employment Service Specialist**

(754) 321-5750

[preston.selvanik@browardschools.com](mailto:preston.selvanik@browardschools.com)

# Semester Information

# Hours of Operation\*

## Admissions Requirements

Schedule a basic skills assessment (\$15) or provide official documentation of a basic skills exemption to your program counselor/advisor.

Schedule an appointment with your program counselor/advisor for basic skills assessment results and/or a program specific orientation. Please note, programs under the following career clusters may have additional requirements for program admission: Education & Training, Law, Public Safety & Security, Health Science, and Information Technology.

Register for classes during open enrollment. Program registration runs on a first come, first served basis.

For additional information, please contact the Office of Admissions at (754) 321-5700.

Classes are subject to cancellation if minimum enrollment is not met.

## Program Delivery Methods

**Traditional** – All coursework completed on campus

**Hybrid** – A program that makes less than 100% of its required instructional hours via distance education.

**Distance** – A program that makes available 100% of its required instructional hours via distance education.

Students enrolled in distance and/or hybrid programs should have daily access to a computer with internet and must have a valid email address that they check daily.

Additionally, students should have all necessary hardware and software components required by their program.



<https://www.mcfattertechnicalcollege.edu/request-information/>



## Office of Admissions

Monday - Friday	7:00am - 5:00pm
Saturday	8:00am - 12:00pm

## Registration

Monday-Thursday	8:00am - 5:00pm
Friday	8:00am - 2:30pm
First Friday of Each Month	8:00am - 1:00pm
Saturday	8:00 am - 12:00pm (noon)

## Financial Aid

Monday - Thursday	8:00am - 4:00pm
Friday	8:00am - 3:00pm
First Friday of Each Month	8:00am - 1:00pm

## Bookstore

Monday, Thursday & Friday	8:00am - 2:30pm
Tuesday & Wednesday	8:00am - 5:30pm
First Friday of Each Month	8:30am - 1:00pm

## Testing

McFatter Technical College is an Authorized Testing Center.

## Basic Skills Assessment

Appointments for testing must be scheduled in advance with the Registration Office.

There is a \$15 non-refundable assessment fee for testing.

## Testing Schedule

Monday	9:00am & 11:00am
Tuesday	11:00am & 4:00pm
Wednesday	9:00am & 11:00am
Thursday	9:00am, 11:00am & 4:00pm
Friday	9:00am
Alternate Saturdays	9:00am

Please arrive at least 15 minutes prior to the start time of your scheduled test. You must have a valid government photo identification to participate in testing.

## Innovative Learning Center (Bldg. 2)

Monday-Friday	8:45am - 4:15pm
---------------	-----------------

## Career Center

Monday-Wednesday	9:00am - 4:30pm
First Friday of Each Month	9:00am - 1:00pm
Friday	9:00am - 3:00pm

And by appointment, please contact:

Ana Isabel Hernandez, Career Center Advisor  
 anaisabel.hernandez@browardschools.com  
 (754) 321-5750

\*Hours are subject to change without notice.

# 2024 - 2025 Calendars

## McFATTER TECHNICAL COLLEGE Career and Technical Education Programs (CTE)

	Term 1 (43 days)	Term 2 (42 days)	Term 3 (51 days)	Term 4 (44 days)	Summer (40 days)
Open Registration (new students)	Ongoing	Ongoing	Ongoing	Ongoing	Ongoing
Term Begins	August 12	October 15	January 6	April 1	June 5
Early Release Days	N/A	N/A	February 14	N/A	N/A
Holiday/School Closed	Aug. 31 - Sep. 2 October 3	November 9-11 Nov. 23 - Dec. 1 Dec. 21 - Jan. 5	January 18-20 February 15-17 March 22-31	April 18-20 May 24-26	June 19 July 4-6
Planning Days/No Classes	August 5-9	October 14 November 5	January 10 March 21	June 4	August 4-8
Last Day of Term	October 11	December 20	March 20	June 3	August 1

## Adult General Education (AGE)

	Term A (85 days)	Term B (69 days)	Term C (66 days)
Open Registration (new students)	Ongoing	Ongoing	Ongoing
Term Begins	August 12	January 6	April 28
Early Release Days	N/A	February 14	N/A
Holiday/School Closed	Aug. 31 - Sept. 2 October 3 November 9-11 Nov. 23 - Dec. 1 Dec. 21 - Jan. 5	January 18-20 February 15-17 March 22-31 April 18-20	May 24-26 June 19 July 4-6 August 2
Planning Days/No Classes	August 5-9 October 14 November 5	January 10 March 21	June 4 August 4-8
Last Day of Term	December 20	April 25	August 1

## Schedule of Saturday Classes for AGE Programs

Term A Term Begins Aug. 24 Total 14	Term B Term Begins Jan. 25 Total 11	Term C Term Begins June 25 Total 11
August 17, 24 September 7, 14, 21, 28 October 5, 12, 19, 26 November 2, 16 December 7, 14	January 11, 25 February 1, 8, 22 March 1, 8, 15 April 5, 12, 26	May 3, 10, 17, 31 June 7, 14, 21, 28 July 12, 19, 26

<b>Program Costs</b>							
<b>Program Title</b>	<b>Florida Resident Tuition \$</b>	<b>Out of State Tuition \$</b>	<b>Registration, Activity, Lab, Test, Insurance &amp; Trust Fees \$</b>	<b>Books and Supplies \$</b>	<b>Industry Cert. Costs \$</b>	<b>Florida Resident Total \$</b>	<b>Out of State Total \$</b>
Accounting Operations	2,520	10,080	295	211	Incl	3,026	10,586
Administrative Office Specialist	2,940	11,760	325	153	Incl	3,418	12,238
Applied Cybersecurity	2,100	8,400	245	463	508	3,316	9,616
Applied Information Technology	1,680	6,720	195	330	350	2,555	7,595
Automotive Collision Technology Technician	3,920	15,680	1,435	166	84	5,605	17,365
Baking & Pastry Arts	1,680	6,720	165	483	Incl	2,328	7,368
Culinary Vegetarian & Plant Based Specialty	1,680	6,720	245	470	Incl	2,395	7,435
Dental Laboratory Technology	5,712	22,848	1,200	68	255	7,235	24,371
Digital Media/Multimedia Design	2,940	11,760	378	64	Incl	3,382	12,202
Digital Photography Technology	2,940	11,760	483	151	Incl	3,574	12,394
Digital Printing Technology	2,772	11,088	462	402	Incl	3,636	11,952
Drafting	4,200	16,800	475	34	90	4,799	17,399
Early Childhood Education	1,680	6,720	245	177	55	2,157	7,197
Electricity	3,360	13,440	795	140	26	4,321	14,401
Electrocardiograph Technology	1,302	5,208	384	236	129	2,051	5,957
Emergency Medical Technician - ATD	840	3,360	701	611	139	2,291	4,811
Firefighter	1,372	5,488	2,177	1,554	74	5,177	9,293
Game/Simulation/Animation Programming	1,680	6,720	245	Incl	100	2,025	7,065
Graphic Communications and Printing Technology	4,620	18,480	773	332	Incl	5,725	19,585
Legal Administrative Specialist	2,940	11,760	325	177	Incl	3,442	12,262
Marine Service Technologies	3,780	15,120	1,215	386	Incl	5,381	16,721
Massge Therapy	2,100	8,400	313	Incl	155	2,568	8,868
Master Automotive Service Technology	5,040	20,160	1,275	306	84	6,705	21,825
Medical Administrative Specialist	2,940	11,760	325	163	125	3,553	12,373
Medical Assisting	3,640	14,560	1,019	613	270	5,542	16,462
Network Support Services	2,940	11,760	430	483	397	4,250	13,070
Pharmacy Technician - ATD	2,940	11,760	704	539	129	4,312	13,132
Practical Nursing	3,780	15,120	1,067	1,253	465	6,565	17,905
Principles of Teaching	1,680	6,720	125	115	55	1,975	7,015
Professional Culinary Arts & Hospitality	3,360	13,440	435	719	Incl	4,514	14,594
Television Production Technology	3,360	13,440	615	147	Incl	4,122	14,202
Web Development	2,940	11,760	378	Incl	250	3,568	12,388
Welding Technology	2,940	11,760	1,008	349	Incl	4,297	13,117
Welding Technology - Advanced	2,100	8,400	733	349	Incl	3,182	9,482

*\*Prices subject to change without notice. Revised 10.24.  
The programs listed are approved by the Commission and state/federal agencies.*

# Adult General Education (AGE)

## Adult Basic Education (ABE)

The Adult Basic Education course of instruction is designed to improve the employability of the state's workforce through instruction in mathematics, reading, language and workforce readiness for students who score below the ninth grade level on the basic skills assessment.

## The Academic Skills Building (ASB)

The ASB program is designed for students who have tested at the equivalent of ninth grade and above, but need to improve their basic skills to meet the requirements of a Career and Technical Education (CTE) program in which they are enrolled.

## Test of Essential Academic Skills Preparation (TEAS Prep)

In order to help students prepare for a passing score on the ATI TEAS test, which is required for admission to the Practical Nursing (PN) program, a comprehensive preparatory course is offered in a face-to-face or online format.

## AGE Course Hours and Schedule

Class	M-F	8:30 am - 11:30 am	\$30
Class	M-F	12:00 pm - 3:00 pm	\$30
Class	Saturday	8:00 am - 12:00 pm	\$30
Online		12 hours per week	\$30

*A Student Activity Fee of \$20.00 will be charged once per school year.*



## GED® Test Preparation

The GED® test preparation course includes instruction in reading, science, social studies, math and language to assist students in preparing and successfully passing the GED® exam. This is an open-entry/open-exit, self-paced and performance-based evaluation course. The GED® exam is offered through our authorized testing center. Please visit [www.ged.com](http://www.ged.com) for additional information. This course also includes Action Steps to Employment instruction.

GED® is a registered trademark of the American Council on Education (ACE) and administered exclusively by GED®.

## GED® Test Preparation Course Hours and Schedule

Class	M-Th	8:30 am - 11:30 am and Online	\$30
Class	M-Th	12:00 pm - 3:00 pm and Online	\$30
Online		12 hours per week	\$30

*A Student Activity Fee of \$20.00 will be charged once per school year.*

## ESOL (English for Speakers of Other Languages)

(754) 321-5837 • (754) 321-5765

[mtcesol@browardschools.com](mailto:mtcesol@browardschools.com)

The English for Speakers of Other Languages is a grammar based program that provides a strong foundation to prepare students to communicate in English, to improve job skills, and to further their technical and academic studies. Classes focus on life skills, reading, test-taking skills, listening, grammar, speaking, and writing. Students advance through the different levels at their own rate of learning.

All ESOL levels are open entry/open exit. Students may register for multiple classes, up to 35 hours of instruction per week. A non-refundable Assessment Fee of \$15.00 will be charged. Photo ID required at time of testing and registration.

## ESOL Registration Hours

(754) 321-5837 • (754) 321-5765

M-F	8:00 am - 2:00 pm
M	4:00 pm - 7:00 pm
T-Th	3:30 pm - 6:00 pm

## ESOL Course Hours and Schedule

Class	M-F	8:00 am - 11:00 am	\$30
Class	M-F	11:30 am - 2:30 pm	\$30
Class	M-Th	5:00 pm - 9:00 pm	\$30
Class	Sat	8:00 am - 12:00 pm	\$30
Online		12 hours per week	\$30

*A Student Activity Fee of \$20.00 will be charged once per school year.*

*The Council on Occupational Education (COE) does not accredit avocational courses, such as Adult General Education (AGE) courses. In addition, these courses do not qualify for Title IV financial aid.*



# Career & Technical Education Programs (CTE)

## Architecture & Construction

### DRAFTING

**1500 Hours | Full-Time: 15 Months | Part-Time: 30 Months | Traditional or Hybrid | Approx. Total Cost \$4799**

**Enrollment: August, January, and June**

Drafting is often called “the universal language of industry.” Whether you are an inventor, architect, or engineer, communicating your ideas clearly and precisely to others is vital to having them become a reality. Technical drawing is the bridge between those ideas and production. CAD (Computer Aided Drafting) knowledge and a command of the graphical language is essential to every project. Every member of a project team is able to communicate and coordinate, through the language of drafting, a precise set of instructions for manufacturing or construction. Manufacturers and contractors then rely on those drawings either to produce the next groundbreaking product or build the next skyscraper.

The Drafting program will introduce you to the basics of drafting, before guiding you into more complex techniques through the use of state-of-the-art software, including AutoCAD, Inventor and Revit.

#### Full-Time (Hybrid)

**Class: Monday - Friday, 8:00am - 1:00pm and**

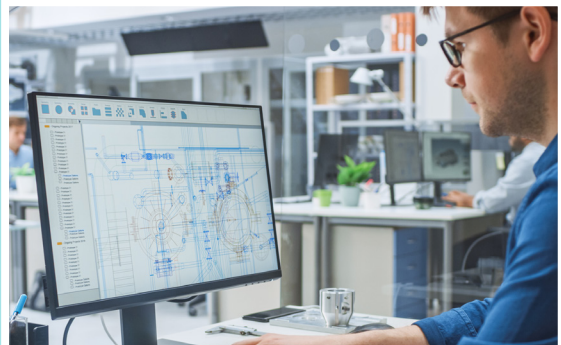
**Online: 7.5 hours/week**

**570 Hours | \$1770**

#### Part-Time (Traditional)

**Class: Monday - Friday, 8:00am - 11:00am**

**285 Hours | \$915**



### ELECTRICITY

**1200 Hours | 12 Months | Traditional | Approx. Total Cost \$4321**

**Enrollment: August**

The Electricity program focuses on training in electricity for residential, commercial, and industrial systems. Students will be instructed on conduit bending techniques, blueprint reading, fire alarm installation, journeyman preparation, and interpreting national and local electrical codes. Students will also master the understanding of all aspects of the electricity industry’s planning, management, finance, technical and productions skills, with underlying principles of technology, labor issues, community issues and health, safety and environmental issues.

This program consists of introduction to solar photovoltaic, national and local codes, A/C and D/C circuits, specialty tools, trouble shooting, installation of electrical systems, electrical safety, grounding, electrical equipment, blueprint reading, and wiring methods.

**Class: Monday - Friday, 7:00am - 1:45pm**

**570 Hours | \$1970**



# Manufacturing

## WELDING TECHNOLOGY

1050 Hours | Full-Time: 10 Months | Part-Time 18 Months | Hybrid

Approx. Total Cost \$4192

Enrollment: August, January and June

The Welding Technology program offers students the necessary skills to enter a challenging and high-demand career in the fields of construction, engineering, manufacturing and many more.

In our training program, students will learn to use gas and electric welding equipment with steel, aluminum and stainless steel metals. In addition to the necessary hands-on skills, students will become well-versed in reading blueprints and applied math.

This entry level program consists of: Basic manufacturing processes • Metals identification • Basic interpretation of welding symbols • Oxyfuel gas cutting practices • Basic Shielded Metal Arc Welding (SMAW) • Gas Metal Arc Welding (GMAW) • Gas Tungsten Arc Welding (GTAW)

Through training, students will be eligible for the American Welding Society (AWS) Certified Welder certification test at an approved testing facility.

### Full-Time

Class: Monday - Thursday, 8:00am - 2:30pm and

Online: 6 hours/week

570 Hours | \$2141

### Part-Time

Class: Monday, Tuesday & Thursday, 5:00pm - 9:00pm and

Online: 4 hours/week

380 Hours | \$1184



## WELDING TECHNOLOGY - ADVANCED

750 Hours | Full-Time: 7 Months | Part-Time: 12 Months | Hybrid

Approx. Total Cost \$3107

Enrollment: August, January and June

If you are ready to enhance your skills in the welding industry, the Welding Technology - Advanced program is for you! This program will refine your skills in gas and electric welding equipment and your work with steel and aluminum. An emphasis will be placed on pipe skills.

This advanced level training program consists of:

- Shielded Metal Arc Welding (SMAW) techniques
- Pipe fitting fabrication techniques
- Advanced Gas Tungsten Arc Welding (GTAW) skills
- Emerging technologies directly related to geographically relevant welding needs.

Through training, students will be eligible for the American Welding Society (AWS) Certified Welder certification test at an approved testing facility.

*Prerequisite: Welding Technology Certificate (please see Welding Technology) and a recommendation from the program instructor.*

### Full-Time

Class: Monday - Thursday, 8:00am - 2:30pm and

Online: 6 hours/week

570 Hours | \$2141

### Part-Time

Class: Monday, Tuesday & Thursday, 5:00pm - 9:00pm and

Online: 4 hours/week

380 Hours | \$1184

# Arts, A/V Technology & Communications

## DIGITAL MEDIA/MULTIMEDIA DESIGN

**1050 Hours | 10 Months | Hybrid | Approx. Total Cost \$3382**  
**Enrollment: August, October, January, April and June**

The Digital Media/Multimedia Design program offers a sequence of courses that provide industry relevant project work to prepare students for positions in the following fields: Print or Web Design, Digital Photography, Videography and Video/Audio Editing. Students will develop an artistic proficiency through the use of Photoshop, InDesign, Illustrator, and Premiere Pro to create interactive animated web content.

This is a hands-on program that provides students with the skills necessary for the design and production of websites, corporate branding, print marketing, as well as website and web-based video content. Students will create an industry-ready online portfolio using WordPress to showcase their design skills, which is required to begin a career in the design industry.

Software Requirements: Adobe Creative Cloud Subscription and Mac or PC computer.

**Class: Monday – Friday, 8:00am – 11:30am and**  
**Online: 12.5 hours/week**  
**570 Hours | \$1799**



## DIGITAL PHOTOGRAPHY TECHNOLOGY

**1050 Hours | 10 Months | Hybrid | Approx. Total Cost \$3574**  
**Enrollment: August, October, January, April and June**

The Digital Photography Technology program is a comprehensive training for the industry that will teach you how to take control of your digital SLR camera. Students will learn the basic functions of a camera so that they can begin to shoot on manual mode and create high-quality images. Instruction includes studio lighting and how to use professional lighting equipment for portraiture. Students will also learn to create how to videos and cinemagraphs.

Through the use of books, videos and demonstrations about digital photography, students develop proficiency in the use of compositional elements of design, studio lighting techniques, High Dynamic Range (HDR) images, indoor/outdoor silhouette images, and lifestyle portraits. Students learn image techniques and digital manipulation using Photoshop and have the opportunity to become certified. After completing the program, employment opportunities are available and range from working in a portrait studio to being a freelance photographer.

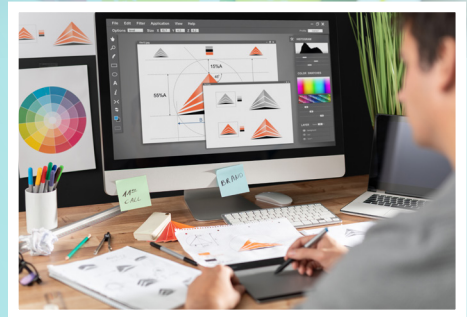
**Class: Monday, Tuesday, Thursday, and Friday, 8:00am - 12:30pm and**  
**Online: 12 hours/week**  
**570 Hours | \$1856**

**DIGITAL PRINTING TECHNOLOGY****990 Hours | 10 Months | Hybrid | Approx. Total Cost \$3636****Enrollment: August, October, January, April and June**

Digital Printing Technology is the graphic design aspect of the graphic communications industry. Through training, students will gain an understanding of image manipulation programs, typography, page layout operations, scanning operations, vector based graphics programs, electronic pre-press operations, and color principles. Instruction is provided in the operation of digital production printing systems and electronic pre-press. Students will become proficient in Photoshop, InDesign and Illustrator and will be eligible to become an Adobe Certified Associate (ACA).

During the program, students create an online portfolio, as well as a printed portfolio. Printing and portfolio projects include: Logos, Business Forms, Package Designs, Newsletters, Brochures, Business Cards, T-shirts, Cups, and Tiles. Digital printing jobs are creative, innovative, high-tech and high-skilled. The Digital Printing Technology lab is a full service printing facility.

**Class: Monday – Thursday, 8:30am – 12:30pm and  
Online: 14 hours/week  
570 Hours | \$1856**

**GRAPHIC COMMUNICATIONS AND PRINTING TECHNOLOGY****1650 Hours | 16 Months | Hybrid | Approx. Total Cost \$5725****Enrollment: August, October, January, April and June**

The Graphic Communications and Printing Technology program is designed to prepare students for entry level employment in the Graphic Communications industry. Students will become proficient in graphic design, prepress fundamentals and offset lithography operations. The program provides hands-on training and experience in: Graphic Design • Typography • Layout & Design • Prepress • Computer to Plate Technology • Press Operations • Bindery & Finishing.

Students will receive hands on-training in Adobe software and will learn page layout, illustration, scanning, and photo retouching. The Graphic Communications and Printing Technology lab is a full service printing facility.

**Class: Monday – Thursday, 8:30am – 12:30pm and  
Online: 14 hours/week  
570 Hours | \$1856**

**TELEVISION PRODUCTION TECHNOLOGY****1200 Hours | 12 Months | Hybrid | Approx. Total Cost \$4122****Enrollment: August, January and June**

McFatter's Television Production Technology program is the most comprehensive training program for the industry. Curriculum includes everything needed in the video production industry: studio camera, jib camera and remote camera operation, sound mixing and recording, studio and remote lighting techniques, scripting, set and scenery design, teleprompting, technical directing, producing, and video editing.

Students edit using Adobe Premiere Pro and are taught video compositing techniques. In addition to these core components, students learn skills not commonly taught in other video training facilities, such as preventive maintenance and video monitoring. Training includes participation in Broward County Public School's television station, where students receive hands-on experience. Students don't come to McFatter's TV Production program to get the training they want... they come to get the training they need.

Classes are located at BECON, 6600 Nova Drive, Davie, FL 33317.

**Class: Monday – Friday, 7:45am – 1:15pm and  
Online: 5 hours/week  
570 Hours | \$1884**

# Business Management & Administration

## ACCOUNTING OPERATIONS

900 Hours | 9 Months | Hybrid | Approx. Total Cost \$3026

Enrollment: August, January and June

The Accounting Operations program will provide you with training in accounting principles, methods of recording and analyzing business transactions, and preparing financial documents in order to enter a career in the accounting and business field.

Students will be introduced to accounting software programs, which includes the preparation, presentation and analysis of financial reports. Accounting skills are taught manually and digitally.

**Class: Monday - Thursday, 5:00pm - 9:00pm and**

**Online: 14 hours/week**

**570 Hours | \$1770**

---

## ADMINISTRATIVE OFFICE SPECIALIST

1050 Hours | 10 Months | Hybrid

Approx. Total Cost \$3418

Enrollment: August, January and June

The Administrative Office Specialist program expands beyond the traditional role of an Administrative Assistant. This program will provide you with the skills and training necessary to launch into a career in the business world.

Through state-approved coursework, you will develop communication skills, higher-level thinking and decision making skills. Additionally, students will learn office procedures, advanced features of business software applications, administrative and financial functions, document production, and new technologies. Students will produce high quality portfolios as they progress through the program.

**Class: Monday - Thursday, 5:00pm - 9:00pm and**

**Online: 14 hours/week**

**570 Hours | \$1770**



## LEGAL ADMINISTRATIVE SPECIALIST

1050 Hours | 10 Months | Hybrid

Approx. Total Cost \$3553

Enrollment: August, January and June

A Legal Administrative Specialist serves as a confidential secretary in the Office of the General Counsel, performing a wide variety of secretarial and administrative tasks. These tasks include preparing documents and correspondence which require knowledge of contracts, briefs, policies and pleadings.

In this program, students will focus on the skills necessary for employment in the legal field, such as legal terminology, preparation of legal documents, utilization of the legal reference library, and office procedures and practices specific to a legal office. Students will use critical thinking and decision making skills as they participate in simulated work-based learning experiences. Additionally, students will receive training in software applications that are used in a legal environment.

**Class: Monday - Thursday, 5:00pm - 9:00pm and**

**Online: 14 hours/week**

**570 Hours | \$1770**



## MEDICAL ADMINISTRATIVE SPECIALIST

1050 Hours | 10 Months | Hybrid

Approx. Total Cost \$3545

Enrollment: August, January and June

A Medical Administrative Specialist serves a key role in medical offices, clinics and hospitals. This multi-skilled practitioner is competent in medical records transcription and management, insurance verification, billing and collections, scheduling and processing, and fundamental office management tasks.

This course provides training in the knowledge of current healthcare practices and medical office functions, including medical terminology, preparation of medical documents, utilizing medical references and records management. Training includes the development of the student's skills by learning software that is utilized in medical offices. Additionally, students will participate in simulated work-based learning experiences to prepare for employment in a medical office.

**Class: Monday - Thursday, 5:00pm - 9:00pm and**

**Online: 14 hours/week**

**570 Hours | \$1770**



# Education & Training



## EARLY CHILDHOOD EDUCATION

**600 Hours | Full-Time: 5 Months | Part-Time: 10 Months | Traditional and Hybrid**

**Approx. Total Cost \$2157**

**Enrollment: August and January**

The Early Childhood Education program prepares the student for employment as a lead preschool teacher in a private preschool setting. With successful completion of this program, the student will earn the Florida Department of Education Early Childhood Professional Certificate (ECPC) along with the Florida Department of Education Children and Families Staff Credential.

The major areas of training for this program include the mandated Department of Children and Families (DCF) 45-hour courses, along with creating and implementing lesson plans, interpersonal relations, community issues, developmentally appropriate practices (DAP), children with special needs, professionalism and employability skills. Students enrolled in this program will be prepared to pursue the national Child Development Associate (CDA).

Student will receive hands-on training in class and through an assigned internship at a private preschool.

*Additional Admissions Requirements: High School Diploma or GED®, physical exam, and background check.*

### Full-Time

**Class: Monday - Friday, 9:15am - 4:15pm\***

**600 Hours | \$1890**

### Part-Time

**Class: Monday - Friday, 9:15am - 12:45pm\***

**332.5 Hours | \$1074**

*\*Class times vary based on online coursework and internship attendance.*

## PRINCIPLES OF TEACHING

**600 Hours | Full-Time: 5 Months | Part-Time: 10 Months | Hybrid | Approx. Total Cost \$1975**

**Enrollment: August and January**

The Principles of Teaching program prepares the student for employment as a teacher assistant within the Broward County Public Schools (BCPS) system. The course content includes an understanding of education in the United States, the ability to work effectively with all students, educational technology, lesson planning and implementation, classroom management, student assessment, communication skills, and other skills needed to support the learning activities of students.

As part of the training, students will be assigned to a BCPS school to complete an internship. Additionally, the program includes a review of the ParaPro Assessment, which is required for employment with BCPS.

*Additional Admissions Requirements: High School Diploma or GED® and background check.*

### Full-Time

**Class: Monday - Friday, 9:15am - 4:15pm\***

**600 Hours | \$1770**

### Part-Time

**Class: Monday - Friday, 9:15am - 12:45pm\***

**317.3 Hours | \$964**

*\*Class times vary based on online coursework and internship attendance.*

# Health Science

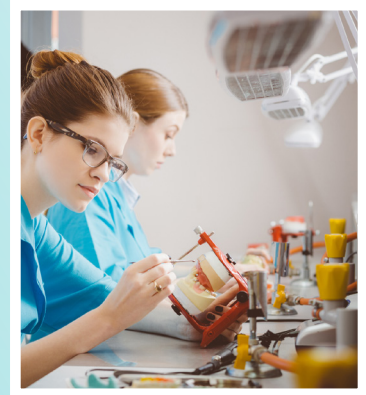
## DENTAL LABORATORY TECHNOLOGY

2040 Hours | 18 Months | Traditional and Hybrid | Approx. Total Cost \$7235

Enrollment: August and January

Are you looking for a career with high earning potential and flexibility? Then the Dental Laboratory Technology program is for you! If you are creative, detail-oriented, like to work with your hands and can distinguish between subtle shades of color, you can enter a rewarding field.

Students will learn how to construct and repair full and partial dentures, fabricate crowns and bridges, apply porcelain, and construct orthodontic appliances. Training includes a practicum experience in an assigned dental laboratory.



Employment opportunities are available nationwide and you can work for a dental laboratory or own one.

*Additional Admissions Requirements:*

*High School Diploma or GED\*, physical examination and immunization record.*

### Traditional

**Class: Monday - Friday, 8:00am - 2:30pm**

**570 Hours | \$1897**

### Hybrid

**Class: Tuesday - Thursday, 5:00pm - 10:00pm and**

**Online: 16.5 hours/week**

**570 Hours | \$1897**

## ELECTROCARDIOGRAPH (EKG) TECHNOLOGY

465 Hours | 5 Months | Hybrid | Approx. Total Cost \$2051

Enrollment: August and January

Make a difference in your life and that of many others by joining the Electrocardiograph (EKG) Technology program. With a blend of theory, detailed skills labs and convenient online assignments, you will be provided with the knowledge and skills necessary to be a well-qualified EKG technician.

Students will be trained to operate equipment that measures and records heart activity and will know how to differentiate between normal and abnormal results.

*Additional Admissions Requirements:*

*Physical examination and immunization record, drug screening (approved vendor only), and Level 2 Background Check (approved vendor only).*

**Class: Monday - Thursday, 4:15pm - 10:00pm\* and**

**Online: 3 hours/week**

**462 Hours | \$1506**

*\*Class times vary based on online coursework and clinical attendance.*





**EMERGENCY MEDICAL TECHNICIAN - ATD****300 Hours | 3 Months | Traditional | Approx. Total Cost \$2291****Enrollment: September, January, and May**

The EMT program provides recruits with the training and skills needed to become nationally certified through the National Registry of EMT (NREMT) and state certified through the Florida Department of Health.

Recruits are required to perform all designated tasks, in simulated hazardous and non-hazardous situations. Additionally, recruits must attend state-mandated clinical rotations, which are conducted in accordance with local hospitals and fire-rescue agencies.



Training topics include: Introduction to Emergency Care • CPR and Basic Life Support (BLS) Techniques • Medical, Legal and Ethical Issues • Communication and Documentation • Anatomy and Physiology • Patient Assessment and Vital Signs • Medical/Trauma Emergencies (Adult and Pediatric) • Pharmacology • Ambulance Operations • Emergency Room Operations • Emergency Response to Terrorism and Weapons of Mass Destruction

**Classes are located at Broward Fire Academy Campus, 2600 S.W. 71st Terrace, Davie, FL 33314.**

*Additional Admissions Requirements:*

*High School Diploma or GED®, physical examination and immunization record, drug screening (approved vendor only), and Level 2 Background Check (approved vendor only).*

*Applicants must complete a physical exam, immunization record, and level II background check (approved vendor only). Please note, additional fees associated with medical screenings are non-refundable.*

**Class: Monday - Thursday, 10:00am - 3:30pm**

**300 Hours | \$1541**

**MASSAGE THERAPY****750 Hours | 7 Months | Hybrid | Approx. Total Cost \$2568****Enrollment: Program is offered four times per year**

The Massage Therapy program is designed to prepare students for employment as licensed massage therapists in a variety of health care and wellness settings, such as spas, resorts, sports clinics, corporate offices, and/or medical offices. Through instruction and demonstration, students will develop skills in the manipulation of soft tissues of the human body. Student practice includes various massage techniques and the use of hydrotherapy and other allied modalities.

Graduates of the Massage Therapy program will be prepared to take the Massage & Bodyworks Licensing Examination (MBLEx). Licensing is required for employment in the State of Florida.

*Additional Admissions Requirements:*

*Physical examination and immunization record, and Level 2 Background Check (approved vendor only).*

**Day Class: Tuesday - Thursday, 12:00pm - 5:00pm or**

**Evening Class: Tuesday - Thursday, 5:00pm - 10:00pm and**

**Online: 16.5 hours/week**

**Practicum 125 hours: Times vary**

**750 Hours | \$2398**

## MEDICAL ASSISTING

1300 Hours | 10 Months | Hybrid | Approx. Total Cost \$5542

Enrollment: August

As a Medical Assistant, you form a crucial link between the patient and the physician. This program will train you in the knowledge and skills required to be a successful healthcare team member.

Over the course of the program, you will learn anatomy and physiology, medical and administrative office duties, infection control, procedures for collecting and handling specimens, patient care techniques, medical instrumentation, office examination procedures, basic diagnostic procedures, pharmaceutical principles, clinical laboratory procedures, and emergency preparedness.

Students will participate in an off-campus practicum experience to enhance their skills and techniques as a medical assistant.

*Additional Admissions Requirements:*

*High School Diploma or GED\*, physical examination and immunization record, drug screening (approved vendor only), and Level 2 Background Check (approved vendor only).*

**Class: Tuesday - Thursday, 8:00am - 3:30pm and**

**Online: 14 hours/week**

**Practicum 200 hours: 35 hours/week (times vary)**

**665 Hours | \$2301**

*The Medical Assisting program is accredited by the Commission on Accreditation of Allied Health Education Programs (www.caahep.org) upon the recommendation of Medical Assisting Education Review Board (MAERB).*

Commission on Accreditation of Allied Health Education Programs  
25400 US Highway 19 N., Suite 158 • Clearwater, FL 33763  
727-210-2350 • www.caahep.org

## UPLOAD YOUR RESUME TO OUR TALENT NETWORK!

**COLLEGE CENTRAL NETWORK IS THE PRIMARY JOB POSTING SERVICE FOR McFATTER TECHNICAL COLLEGE STUDENTS & ALUMNI:**

**COLLEGE CENTRAL NETWORK SERVICES HELP YOU FIND A JOB AND GET THE SCOOP ON CAREER-RELATED PROGRAMS AND EVENTS.**

For information about College Central Network services at your school, call **Ana Isabel Hernandez at 754-321-5750** or email **anisabel.hernandez@browardschools.com**

To access your College Central Network services page, visit:  
**collegecentral.com/mcfattertech**

Since 1996, College Central Network has worked with colleges and universities across the country to advance their students' job searches.

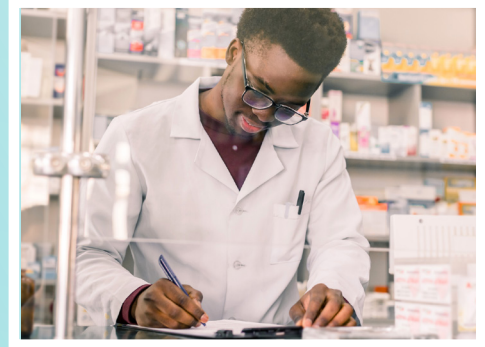
Today we're proud to be the nation's largest network of entry-level job seekers from small to midsize college and university and community college career and employment centers.



**www.collegecentral.com**

**PHARMACY TECHNICIAN – ATD****1050 Hours | 10 Months | Hybrid | Approx. Total Cost \$4312  
Enrollment: August**

As a pharmacy technician, you can become part of one of the fastest growing careers in the medical field. Throughout the program, students are provided with knowledge and skills needed to work closely with pharmacists and other technicians in retail/community, hospitals and many other disciplines. Lab simulations will allow students to obtain hands-on practice prior to the clinical experiences in the community and hospital pharmacies.



This program will prepare you for the Certified Pharmacy Technician (CPhT) credential and in becoming a Florida Board of Pharmacy Licensed technician (RPhT).

*Additional Admissions Requirements:*

*High School Diploma or GED<sup>®</sup>, physical examination and immunization record, drug screening (approved vendor only), and Level 2 Background Check (approved vendor only).*

**Class: Monday - Friday, 8:00am - 2:30pm\***  
**510 Hours | \$1705**

*\*Class times vary based on online coursework and clinical attendance.*

**PRACTICAL NURSING****1350 Hours | 12 Months | Traditional | Approx. Total Cost \$6565  
Enrollment: September, December, March, and June**

Do you want to make a real difference in the lives of others? It is time to consider a career as a nurse! Whether in a hospital setting, doctor's office or private duty, nurses have moved beyond the role of being the doctor's assistant. Today's nurses are responsible for encouraging the health of individuals and families, and play an essential role in the physical and emotional care of patients. Become part of this century's highly respected and sought-after profession. The opportunities are endless, and McFatter's Practical Nursing program is the place to start!

Theory, laboratory, simulation, and clinical experiences are integrated into the curriculum providing an opportunity to learn. In addition to a traditional classroom and laboratory environment, an onsite High Fidelity Simulation Center is utilized throughout the program.

## Program Data:

- 2021-2022 Completion rate 67%
- 2021-2022 Job placement rate 80%
- 2022-2023 NCLEX-PN Pass Rate 87%

*Additional Admissions Requirements:*

*High School Diploma or GED<sup>®</sup>, passing TEAS scores (or an exemption), physical examination and immunization record, drug screening (approved vendor only), and Level 2 Background Check (approved vendor only).*

*See page 5 for information on our TEAS preparation course.*

**Class: Monday - Thursday, selected Fridays 7:00am - 3:00pm**  
**300 Hours | \$1048**



*This program is accredited by:*  
Accreditation Commission for  
Education in Nursing, Inc. (ACEN)  
3343 Peachtree Road NE, Suite 850  
Atlanta, Georgia 30326  
P.404.975.5000 • F.404.975.5020  
[www.acenursing.org](http://www.acenursing.org)

# Hospitality and Tourism

## BAKING & PASTRY ARTS

**600 Hours | 6 Months | Hybrid | Approx. Total Cost \$2328**

**Enrollment: August and January**

Few careers are as “sweet” as those of a pastry chef. If you are creative and detail-oriented, McFatter’s Baking and Pastry Arts program is for you. Learn how to create breads, pastries and desserts that look as beautiful as they taste!

Students will learn specific food preparation techniques, as well as how to measure correctly, mix and blend and make visually appealing creations, which are all necessary skills for a pastry chef. Hands-on activities are completed in our state of the art, full production commercial kitchens. Academic activities and sanitation (ServSafe®) are a blend of lectures, videos, demonstrations and online curriculum.

Take the first step toward receiving credit for that meal-ending dessert that wows the crowd!

**Class: Monday - Thursday, 4:30pm - 10:00pm and**

**Online: 13.75 hours/week**

**600.75 Hours | \$1832**

## CULINARY VEGETARIAN & PLANT-BASED SPECIALTY

**600 Hours | 6 Months | Hybrid | Approx. Total Cost \$2395**

**Enrollment: January**

One of the hottest growing trends is plant-based cooking, which has resulted in a demand for trained plant-based chefs. If your passion is to prepare wholesome, nourishing foods, your talents are needed in modern professional plant-based kitchens.

Learn what it takes to succeed by focusing on preparation, cooking methods, presentation, and choosing nutritionally sound ingredients, while using a variety of whole, natural foods. Hands-on activities are completed in our state of the art, full production commercial kitchens. Academic activities and sanitation (ServSafe®) are a blend of lectures, videos, demonstrations and on-line curriculum.

This course prepares students for employment in the plant-based food industry and will be the catalyst to a healthier personal lifestyle. Come explore the world of plant-based cooking and become inspired to let your creativity shine.

**Class: Monday - Thursday, 4:30pm - 10:00pm and**

**Online: 13.75 hours/week**

**600.75 Hours | \$1892**

## PROFESSIONAL CULINARY ARTS & HOSPITALITY

**1200 Hours | Full-Time: 10 Months | Part-Time: 18 Months | Traditional or Hybrid | Approx. Total Cost \$4514**

**Enrollment: August, October, January, April and June**

The Professional Culinary Arts & Hospitality program offers students the opportunity to prepare for employment in the food service industry.

Over the course of the program, students will learn commercial tools and equipment, food science and culinary math, nutrition, and food preparation skills. Training includes cooking demonstrations and hands-on skills in the following areas of food preparation: Garde manager and buffets • fruits and vegetables • dairy, egg and starch by-products • stocks, soups and sauces • meats, poultry, fish and seafood • bakery goods and desserts.

Hands-on activities are completed in our state of the art, full production commercial kitchens. Academic activities and sanitation (ServSafe®) are a blend of lectures, videos, demonstrations and on-line curriculum.

### **Full-Time (Hybrid)**

**Class: Monday - Friday, 7:30am - 1:15pm and**

**Online: 7.5 hours/week**

**641.25 Hours | \$2016**

### **Full-Time (Hybrid) Evenings**

**Class: Monday - Thursday, 4:30pm - 10:00pm and**

**Online: 13.75 hours/week**

**641.25 Hours | \$2016**

### **Part-Time (Traditional)**

**Class: Monday - Friday, 7:30am - 11:00am**

**332.5 Hours | \$1074**

# Information Technology

## APPLIED CYBERSECURITY

**750 Hours | 7 Months | Distance | Approx. Total Cost \$3316**

**Enrollment: August and January**

Applied Cybersecurity is a hands-on program that will give students real-world security scenarios. Through this program, students will learn to identify security threats, protect computers from hackers and malware, and secure wireless networks. Instruction will focus on how to secure residential, as well as business computers, and fill the demand at public and private companies to address internet security concerns in today's world.

The state approved course content includes foundational knowledge and skills in computer and network security, security vulnerabilities, attack mechanisms and techniques, intrusion detection and prevention, cryptographic systems, system hardening, risk identifications, incident response, penetration testing, key management, access control, and recovery. Specialized courses focus on database security, planning and analysis, software, and web security.

Throughout this program, students will prepare for security+ and nationally recognized security industry certifications. The coursework and applications used for program training are compatible with Windows 10 or higher.

*Additional Admissions Requirements:*

*Certificate of Completion in Network Support Services or CompTIA A+ and Network+ or CCNA certifications.*

**Class: Saturday, 8:00am - 12:00pm and**

**Online: 26 hours/week**

**740 Hours | \$2280**

## APPLIED INFORMATION TECHNOLOGY

**600 Hours | 6 Months | Hybrid | Approx. Total Cost \$2555**

**Enrollment: August, January, and June**

This program is designed to instruct the student computer application skills including computer hardware and software applications, systems support and maintenance, and network concepts. The student will be prepared to enter a specialized information technology cluster program at an advanced, accelerated level.

**Class: Thursday, 5:30pm - 8:30pm and**

**Online: 19.5 hours/week (Monday, Tuesday, Wednesday, and Friday 4.5 hours/day; Thursday 1.5 hours)**

**598.5 Hours | \$1856**

## GAME/SIMULATION/ANIMATION PROGRAMMING

**600 Hours | 6 Months | Distance | Approx. Total Cost \$2025**

**Enrollment: August and January**

The Game/Simulation/Animation Programming program contains a series of introductory level courses designed to leave novice PC users with a strong foundation in 2D and 3D game design, modeling, and animation.

Training includes clear and rigorous content that is aligned with challenging academic standards and relevant technical knowledge/skills. These important skills are needed to prepare for further education and/or careers in the Information Technology career cluster, such as a Game Designer/Programmer or a Game Software Developer. Students will gain knowledge in multiple programming languages (HTML 5, CSS, JavaScript, and C# Programming for Unity 5) and will be exposed to the intricate process behind planning and producing games. Students will also have an opportunity to learn how to create 3D Models and Animations from scratch using Blender 2.8.

Students must have access to a computer with high-speed Internet, an Intel Core i5 or i7 processor, 32-64GB of memory, and 1TB of hard drive space. A dedicated graphics processing unit with a minimum of 8GB of RAM is recommended. The coursework and applications used for training are compatible with Windows 10.

**Online: 30 hours/week**

**600 Hours | \$1890**

## NETWORK SUPPORT SERVICES

1050 Hours | 10 Months | Traditional

Approx. Total Cost \$4250

Enrollment: August, January and June

Local Area Networks, as well as the internet, consist of routers, switches and servers communicating through the implementation of routing protocols in the LAN and WAN. The Network Support Services Program prepares you to meet the challenges of computer diagnostics, LAN development and WAN integration.

Program training will provide you with an opportunity to earn your CompTIA A+ and CompTIA Network+ certifications, while developing the hands-on skills that make you a leader in the field of Information Technology.

The course content includes: subnetting, routing, wireless, network design and layout, virtualized infrastructure, VLANs, access control lists, and troubleshooting using a layered model.

**Class: Monday - Friday, 8:00am - 2:30pm**

**570 Hours | \$1827**

---

## WEB DEVELOPMENT

1050 Hours | 10 Months | Hybrid or Distance

Approx. Total Cost \$3568

Enrollment: August, January and June

Unlock the secrets of Web development in all its forms by designing, coding and publishing websites that can work in mobile, tablet and desktop formats.

To create websites that are dynamic and engaging, students will use cutting edge tools, such as HTML5/CSS3, Photoshop, Dreamweaver, WordPress, Web database applications, and JavaScript. Students will also learn and work with eCommerce, search engine optimization (SEO) and social media management to develop a real-world portfolio, using all of the skills acquired through program training to gain entry-level employment or start their own business as a Web designer and developer.

This program will provide you with an opportunity to earn industry certifications from Adobe Certified Associate (ACA). Additionally, students will receive free Web hosting services to develop, host, and maintain their own portfolios.

### Hybrid

**Class: Mondays, 8:30am - 12:30pm and**

**Online: 26 hours/week**

**570 Hours | \$1799**

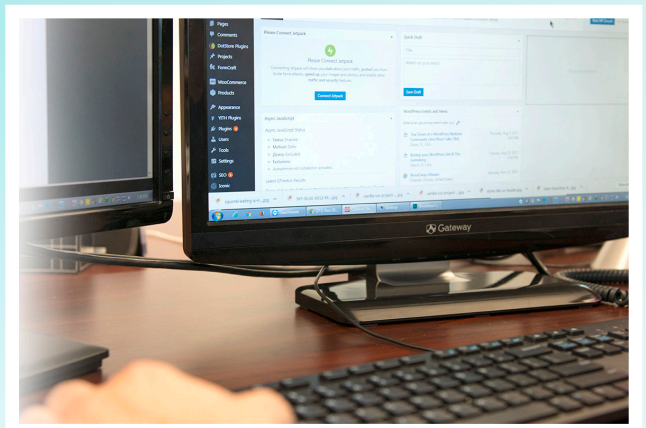
### Distance

**Monday-Friday 100% online asynchronous**

**Not approved for veteran status students**

**Online: 30 hours/week**

**570 Hours | \$1799**



# Law, Public Safety and Security



## **FIREFIGHTER**

**492 Hours | Full-Time: 3.5 Months | Part-Time: 5.5 Months | Traditional**  
**Approx. Total Cost \$5177**

**Enrollment: Full-Time: September, January and May**  
**Part-Time: June and January**

The Firefighter program provides recruits with the training required to become certified firefighters. Recruits will be required to perform all designated tasks, in simulated non-hazardous and hazardous situations. At the conclusion of the program, and following the successful completion of the State of Florida practical and written examinations, recruits will receive a Certificate of Compliance from the Florida State Fire Marshal in accordance with Florida State Statute 633.

Training topics include: • Introduction to the Fire Service • Fire Prevention • Fire Behavior Theory • Building Construction • Forcible Entry • Search and Rescue • Fireground Operations • Vehicle Extrication • Wildland Firefighting • Hazardous Material Response and Mitigation • Emergency Response to Terrorism • Weapons of Mass Destruction

Classes are located at Broward Fire Academy Campus, 2600 S.W. 71st Terrace, Davie, FL 33314

*PREREQUISITE: Emergency Medical Technician (EMT) Certification*  
*(Please see Emergency Medical Technician-ATD)*

*Additional Admissions Requirements:*

*High School Diploma or GED\*, physical examination, Level 2 Background Check (approved vendor only) and passing results on a Broward Fire Academy Physical Ability Test*

### **Full-Time**

**Class: Monday - Friday, 7:00am - 5:00pm**  
**492 hours | \$3549**

### **Part-Time**

**Class: Tuesday - Thursday, 5:00pm - 10:00pm**  
**and Saturday, 7:00am - 5:00pm**  
**492 Hours | \$3549**

# Transportation, Distribution and Logistics



## **AUTOMOTIVE COLLISION TECHNOLOGY TECHNICIAN**

**1400 Hours | Full-Time: 14 Months | Part-Time 24 Months | Hybrid | Approx. Total Cost \$5605**

**Enrollment: August, October, January, April and June**

The Automotive Collision Technology Technician program at McFatter Technical College goes beyond a simple body shop repair program. It is considered by many to be a study in physics & chemistry; while others consider the end-result as a “work of art” or even a “masterpiece!”

Students are taught the technical skills by experts in the field, who are fully certified with years of experience. Students are exposed to both theory and hands-on activities in order to prove the required competencies, such as sheet metal repair procedures, estimating, related mechanical and electrical repairs, and safe work practices.

The classroom and shop are equipped with the latest equipment and systems, which includes: Car-O-Liner, CTR-1200 – Spot Welder, Waterborne and Cromax Max Paint System.

### **Full-Time**

**Class: Monday - Thursday,**

**7:00am - 1:45pm and**

**Online: 6 hour/week**

**570 Hours | \$2169**

### **Part-Time (Option 1)**

**Class: Monday - Thursday,**

**7:00am - 10:00am and**

**Online: 3 hours/week**

**285 Hours | \$1115**

### **Part-Time (Option 2)**

**Class: Monday - Thursday,**

**10:45am - 1:45pm and**

**Online: 3 hours/week**

## **MASTER AUTOMOTIVE SERVICE TECHNOLOGY**

**1800 Hours | 15 Months | Hybrid | Approx. Total Cost \$6705**

**Enrollment: August, October, January, April and June**

Do you have a passion for repairing cars? Are you good with your hands and skilled in reading and following instructions? Then consider becoming trained in the high demand automotive maintenance and repair industry, which offers a promising future.

Through program training, students will develop the foundation required to maintain, repair, diagnose, or replace automotive systems and their components. Students will receive instruction in all eight (8) Automotive Service Excellence (ASE) areas. Program training includes a mixture of theory, lectures, demonstrations, hands-on activities, and on-line components, to provide students with the “tools” needed for success.

The Automotive Service Technology program at McFatter Technical College will prepare you for a career in the automotive service and repair arena.

### **Full-Time**

**Class: Monday - Friday, 8:00am - 1:00pm**

**Online: 10 hours/week**

**570 Hours | \$1998**

## **MARINE SERVICE TECHNOLOGIES**

**1350 Hours | 12 Months | Hybrid | Approx. Total Cost \$5381**

**Enrollment: August**

Do you have a passion for boats? Why not consider a career as a marine service technician? The Marine Service Technologies program will prepare you for a high demand career in the pleasure-boat service & repair industry.

Program training includes 2 and 4 stroke engines, inboard gas engines, advanced fuel injection, electrical systems, and diagnostics of computer controlled systems used on modern outboard motors from major manufacturers. Additionally, the program features electrical fundamentals and pleasure boat instrumentation as it pertains to the National Marine Electronics Association (NMEA) and American Boat & Yacht Council (ABYC). The program is taught by a factory certified instructor and consists of theory, lectures, demonstrations, and class discussions. Students are expected to learn mechanical theories, as well as perform hands-on activities, accomplish diagnostic scenarios and overhaul specific components. Students work individually and in groups/teams, which is a common practice in the Marine industry.

**Class: Monday - Thursday, 8:00am - 2:30pm and**

**Online: 6 hours/week**

**570 Hours | \$2112**



# Accreditations

McFatter Technical College is accredited by the accrediting commission of the



## Council on Occupational Education

7840 Roswell Road  
Building 300, Suite 325  
Atlanta, GA 30350  
770.396.3898 • 800.917.2081  
[www.council.org](http://www.council.org)

## ■ Cognia (formerly AdvancED)

9115 Westside Parkway  
Alpharetta, GA 30009  
(888) 413-3699  
[www.cognia.org](http://www.cognia.org)

## ■ American Welding Society

## ■ Automotive Collision Technology Technician

Automotive Service Excellence (ASE) Education Foundation

## ■ Automotive Service Technology

Automotive Service Excellence (ASE) Education Foundation

## ■ Bureau of Fire Standards & Training

## ■ Commission of Allied Health Education Programs

## ■ Dental Laboratory Technology

American Dental Association Commission on Dental Accreditation

## ■ Department of Veterans' Affairs Bureau of State Approving for Veterans' Benefits (VA)

## ■ Emergency Medical Technician - ATD

Florida Department of Health Bureau of Emergency Medical Services (FDHBEMS)

## ■ Florida Board of Nursing

## ■ Florida Department of Education

## ■ Graphic Communications and Printing Technology

Graphic Arts Education and Research Foundation  
PrintEd

## ■ Medical Assisting

Commission on Accreditation of Allied Health Education Programs upon the recommendation of the Medical Assisting Education Review Board (MAERB)

Commission on Accreditation of Allied Health Education Programs

9355 113 St. N., Suite 7709  
Seminole, FL 33775  
(727) 210-2350  
[www.caahep.org](http://www.caahep.org)

## ■ Practical Nursing

Accreditation Commission for Education in Nursing, Inc. (ACEN)

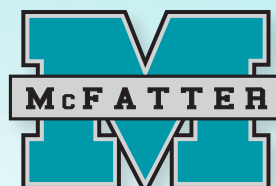
3343 Peachtree Road NE, Suite 850  
Atlanta, Georgia 30326  
P.404.975.5000  
F.404.975.5020  
[www.acenursing.org](http://www.acenursing.org)



## ■ Professional Culinary Arts & Hospitality

American Culinary Federation Education Foundation, Inc. Accrediting Commission (ACFEF AC)

6816 Southpoint Parkway, Suite 400  
Jacksonville, Fl. 32216  
800.624.9458



# General Information

## Refund Policy

School Board Policy 6607 governs refunds of all programs.

All refunds shall be accounted for and audit trails maintained in accordance with Business Practice Bulletins issued by the Office of the Chief Financial Officer.

Students who appear at the school in person and voluntarily withdraw within five (5) school days of the beginning of a term shall be entitled to a full refund of tuition, student activity fee, fee-supported cost recovery, and lab/supply fees. Registration fees and Health Science Education fees are non-refundable. Five (5) school days shall not apply to courses less than three (3) weeks or ninety (90) hours in duration. In such cases, the request for withdrawal must be made prior to the course meeting more than one-third (1/3) of its assigned hours. Retention of fees collected in advance for a student who does not enter class shall not exceed \$100. Refunds will be made within forty-five (45) days of the date on which the student voluntarily withdraws.

Students involuntarily withdrawn pursuant to the Adult Student Conduct and Discipline Code are not entitled to a refund of any fees.

Students who pay fees but are entitled to a waiver, voucher or agency payment (refer to Policy #6606) shall be entitled to a refund of fees only if required evidence is presented to the school/college principal or his/her designee within fifteen (15) school days of the beginning of the term.

In the case of unusual or extraordinary circumstances (such as illness, death in family, etc.) that preclude a student's enrollment, the school principal or his/her designee may honor a request for full or partial refund of fees providing that: (1) the request is made in writing prior to the date that the course would have normally ended, (2) supporting evidence (where appropriate) is provided. If said refund results in a failure to satisfy state fee requirements, the student shall not be reported for membership during the Workforce Education Fund survey period in the course for which the refund is given. Students who feel they have been treated unfairly in the application of this policy or its rules may appeal using the students' grievance procedure as presented in the Broward Technical Colleges Student Handbook. Refunds, when due, will be made without requiring a request from a student.

Refunds, when due, will be made within forty-five (45) days: (1) of the last day of attendance if written notification of withdrawal has been provided to the school/college by the student, or (2) from the date the school/college withdraws the student or determines withdrawal by the student.

A student is entitled to a full refund of fees if a course is canceled by the school/college principal or his/her designee, provided however, that the student was not reported in membership during the Workforce Education Fund survey period in which the class was counted. If so, only those fees in excess of the state requirements shall be refunded.

Miscellaneous items purchased from the school bookstores (textbooks, uniforms, etc.) may be returned for a full refund provided that the items are unused, in the original packaging and currently being used in the instructional program.

## Financial Services

Financial assistance is available to those who qualify. Visit [studentaid.gov](http://studentaid.gov) to apply.

Financial assistance programs are designed to provide assistance to eligible individuals who have the ability to benefit from training and who, without assistance, would be unable to afford to attend. The following financial assistance programs may be available to students depending on the course of study:

- Career Source Broward County Public Schools
- Community Agencies
- Federal Pell Grant
- Federal Supplemental Educational Opportunity Grant (FSEOG)
- Fee Waivers
- Financial Aid Fee Trust Fund (FAFTF)
- Florida Student Assistance Grant (FSAG)
- Scholarships
- Veterans' Educational Benefits
- Vocational Rehabilitation Services
- Open Door Grant

## Methods of Payment

Registration, tuition and testing fees may be paid with cash, debit card, MasterCard or Visa. The college is not permitted to cash personal checks.

## Veterans Educational Benefits

Most programs are approved for veterans training. For information pertaining to the college's VA approved programs, contact the Veterans Certifying Official.

## Transfer Policy

Students with prior training or experience may be eligible for advanced placement upon approval of the institution. For more information regarding internal transfers, please refer to pages 8-9 of the McFatter Technical College Catalog.

## Grading System

The district prescribed guidelines are used to evaluate student performance as follows:

A	90-100%	D	60-69%
B	80-89%	F	0-59%
C	70-79%	I	Incomplete

## Articulation

Upon completion of the technical program and meeting eligibility requirements, students may be awarded credits towards an Associate of Science (A.S.) Degree or Associate of Applied Science (A.A.S.) Degree at selected Florida state colleges.

# Campus Life

## Career Services

**Ana Isabel Hernandez**  
**754.321.5750**  
[anaisabel.hernandez@browardschools.com](mailto:anaisabel.hernandez@browardschools.com)

Create/Update/Review Resumé

Mock Interviews

Job Lead Assistance

College Career Network  
 Job Board

Students/Alumni:  
 Be sure to register at College Central  
[www.collegecentral.com/mcfattertech](http://www.collegecentral.com/mcfattertech)

**Hours of Operation:**  
**Monday-Wednesday 9:00am-4:30pm**  
**Friday 9:00am-3:00pm**  
 and by appointment  
**754.321.5750**

## Alumni Association

**Jennifer Long**  
**754.321.5802**  
[jennifer.long@browardschools.com](mailto:jennifer.long@browardschools.com)

Register on  
 Broward Tech Connect today!  
<https://browardtechconnect.com/>

Alumni Spotlights

Registration in the Alumni Directory

Seminars

Social Networking Events



ALUMNI  
 ASSOCIATION

*“Be brave. Take risks.  
 Nothing can substitute experience.”*

*- Paul Coelho*



## McFatter Technical College and Technical High School

### Main Campus

6500 Nova Drive | Davie, FL 33317 | 754.321.5700

### Broward Fire Academy Campus

2600 S.W. 71 Terrace | Davie, FL 33314 | 754.321.1300

Celeste R. Johnson, Director  
Darryl B. Harris, Assistant Director  
Kurt McNabb, Assistant Director  
Larry Rothman, Assistant Director



### The School Board of Broward County, Florida

Lori Alhadeff, Chair | Debra Hixon, Vice Chair

Torey Alston | Brenda Fam, Esq. | Daniel P. Foganholi

Dr. Jeff Holness | Sarah Leonardi

Nora Rupert | Dr. Allen Zeman

### Dr. Howard Hepburn, Superintendent

*The School Board of Broward County, Florida, prohibits any policy or procedure which results in discrimination on the basis of age, color, disability, gender identity, gender expression, genetic information, marital status, national origin, race, religion, sex or sexual orientation. The School Board also provides equal access to the Boy Scouts and other designated youth groups. Individuals who wish to file a discrimination and/or harassment complaint may call the Director, Equal Educational Opportunities/ADA Compliance Department & District's Equity Coordinator/Title IX Coordinator at 754-321-2150 or Teletype Machine (TTY) 754-321-2158.*

*Individuals with disabilities requesting accommodations under the Americans with Disabilities Act Amendments Act of 2008, (ADAAA) may call Equal Educational Opportunities/ADA Compliance Department at 754-321-2150 or Teletype Machine (TTY) 754-321-2158.*



[www.mcfattertechnicalcollege.edu](http://www.mcfattertechnicalcollege.edu)

Scan here to get started!

